

# PPC-112W

## 11.6" All-in-One Panel PC with Rockchip RK3399 processor and Android 10 OS



### Features

- True flat wide display screen with Pcap multi-touch
- Embedded Rockchip RK3399 processor, Dual-core Cortex-A72 up to 1.8GHz and Quad-core Cortex-A53 up to 1.4GHz
- Onboard 2GB LPDDR4-1333 memory, 16GB eMMC NAND Flash
- IP65 rated front panel protection
- Supports VESA 100 and panel mounting(optional)
- Supports Android 10 pre-installed or Debian 9 (optional)



### Introduction

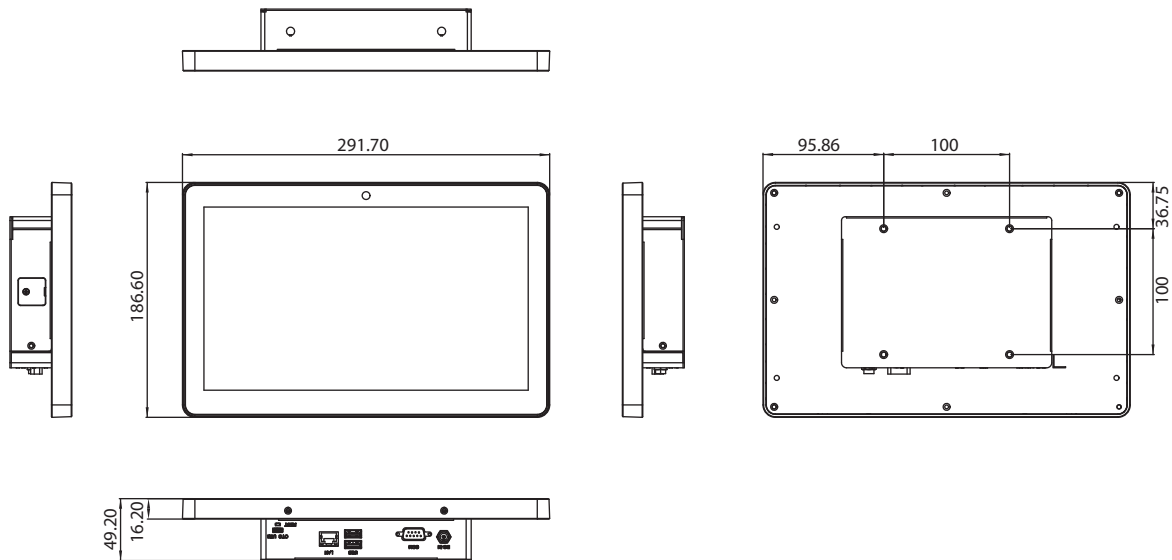
PPC-112W is 11.6" All-in-One PPC with Rockchip RK3399 processor and Android 10 OS pre-installed. Featuring 11.6" wide screen display and 10 points Pcap multi-touch, IP65 rated front panel, VESA or panel mounting support, PPC-112W provides friendly experience and reliable integration possibility. External 2 x USB 2.0/3.0, 1 x RS-232 expands more flexible connection. Pre-installed Android 10, PPC-112W helps customer visiting web information quickly in various IoT applications.

### Specifications

<b>System</b>	CPU	Rockchip RK3399 Big.Little architecture: Dual Cortex-A72 + Quad Cortex-A53, 64-bit CPU
	GPU	Mali-T860
	Memory	On-board 2GB LPDDR4-1333
	Network (LAN)	1 x 10/100/1000 Mbps Ethernet (RTL8211FSI)
	I/O ports	1 x USB 2.0; 1 x USB 3.0; 2 x USB 2.0 (internal by request) 1x micro USB OTG 1 x RS 232; 1 x RS232 (internal by request) 1 x DC in 5 x GPIO (by request) (3.3V TTL level)
	Expansion	1 x M.2 2230 Key E slot for wireless card 1 x Camera (by request)
	Watchdog Timer	Max timeout: 21s, Default timeout: 10s
<b>General</b>	Storage	16GB eMMC NAND Flash; 1x Micro SD slot (Max.128G)
	Input Voltage	12V <sub>DC</sub> , 36W adapter
	OS	Android 10 (default), Debian 9 (optional)
	Weight	1.78kg
	Dimensions	291.7 x 186.6 x 49.2 mm
	Mounting	VESA 100, Panel mounting (optional)
<b>Display</b>	Size	11.6" Panel
	Resolution	1366 x 768
	Viewing Angle	45 (left), 45 (right), 20 (up), 40 (down)
	Brightness	250
	Contrast Ratio	500
	Backlight Lifetime	15,000 hrs (Min.)
<b>Touch screen</b>	Type	Projected Capacitive Multi-touch
	Light Transmission	≥ 88%
	Interface	USB
<b>Environment</b>	Operating Temperature	0 ~ 50°C
	Storage Temperature	-20 ~ 60°C
	Humidity	10 ~ 95% @ 40°C (non-condensing)
	Shock	Operating 10 G peak acceleration (11 ms duration), follow IEC 60068-2-27
	Vibration	Operating Random Vibration Test 5~500Hz, 0.5Grms, follow IEC 60068-2-64
	EMC	CE, FCC Class B, BSMI
	Safety	CB, UL, CCC, BSMI, UKCA
	Front panel	IP65 compliant

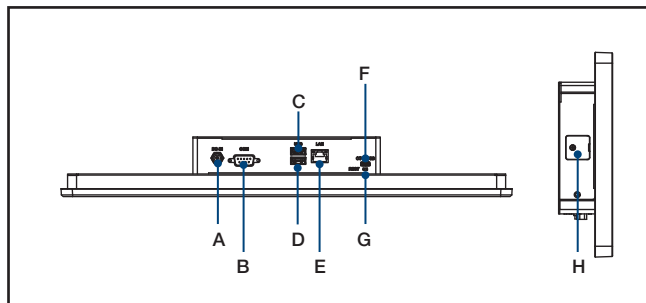
## Dimensions

Unit: mm



**Panel Cutout Dimensions: 298.00 x 193.00 mm (11.73 x 7.60 in)**

## I/O View



- |                |                      |
|----------------|----------------------|
| A. DC-IN       | E. 1 x LAN           |
| B. 1 x RS-232  | F. 1 x Micro USB OTG |
| C. 1 x USB 2.0 | G. 1 x Reset button  |
| D. 1 x USB 3.0 | H. 1 x Micro SD slot |

## Ordering Information

Part Number	Description
PPC-112W-PK91A	11.6" All-in-one Panel PC with Rockchip RK3399 and Android, 2GB LPDDR4, assembled in China
PPC-112W-PK91AU	11.6" All-in-one Panel PC with Rockchip RK3399 and Android, 2GB LPDDR4, assembled in Taiwan
PPC-ARM-A03	ARM VESA Standard (A-CLEVER) for PPC series
PPC-174T-WL-MTE	Wall mount kit for PPC series
98R3P112W00	Panel mount kit for PPC-112W
98R3P115W10	Wifi module for PPC-115W
PPC-Stand-A1E	Stand for PPC series
1700001524	Power cord 3P UL 10A 125V 1.8M
170203183C	Power cord 3P Europe (WS-010+083) 183cm
1700008921	Power cord 3P/3P 1.8M PSE
96CB-POWER-B-1.8MB	Power code 3P CCC(China) 1.8M
96PSA-A36W12W7-5	ADP A/D 100-240V 36W 12V C6 LOCK DC JACK 62368

Please note: If some optional modules are offered with the system, additional system certificates may be required in certain regions/countries. Please contact Advantech for certificate compliance.