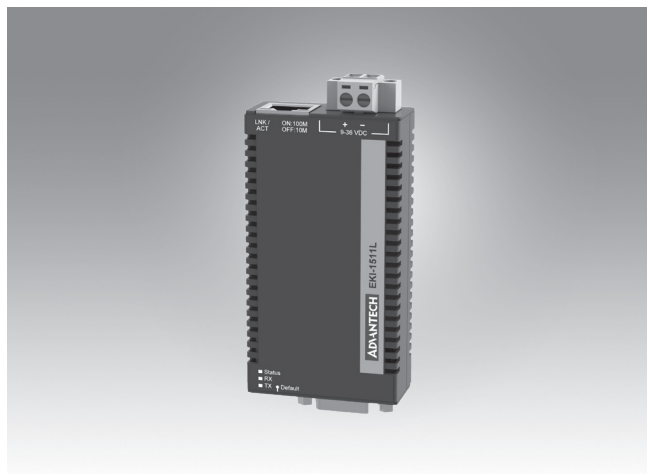


EKI-1511L

1-Port RS-232 Serial Device Server



Features

- 1 x 10/100 Mbps Ethernet port
- Provides COM port redirection (Virtual COM), TCP, and UDP operation modes
- Baud rate: supports up to 230.4 Kbps
- Maximum of five hosts can access one serial port
- Maximum of 16 hosts accessed in TCP client mode
- Built-in 8-kV ESD protection for all serial signals
- Provides multiple configuration methods including Windows utility, Telnet console, and web browser
- Supports 32/64-bit Windows 2000/XP/Vista/7/8/8.1/10, Windows Server 2003/2008/2012, and Linux

Introduction

The EKI-1511L focuses on the entry level device server market, providing an economic solution that is designed to connect RS-232 serial devices such as PLC, meters, sensors, and barcode readers to an IP-based Ethernet LAN. This allows nearly any device with a serial port to connect and share an Ethernet network, while also providing various operations such as COM port redirection (Virtual COMport), TCP server, TCP client, and UDP mode. With COM port redirection mode, standard serial operation calls are transparently redirected to the servers, guaranteeing compatibility with legacy serial devices and enabling backward-compatibility with existing software. With TCP server, TCP client, and UDP modes, the EKI-1511L ensures compatibility in network software using a standard network API. Serial devices can communicate with other devices via peer-to-peer, thus eliminating the need for an intermediate host PC and software programming.

Specifications

Ethernet Communications

- **Compatibility** IEEE 802.3, IEEE 802.3u
- **Speed** 10/100 Mbps
- **No. of Ports** 1
- **Port Connector** 8-pin RJ45
- **Protection** Built-in 2.25 k V_{DC} magnetic isolation

Serial Communications

- **Port Type** RS-232
- **No. of Ports** 1
- **Port Connector** DB9 male
- **Data Bits** 5, 6, 7, 8
- **Stop Bits** 1, 1.5, 2
- **Parity** None, Odd, Even, Space, Mark
- **Flow Control** XON/XOFF, RTS/CTS
- **Baud Rate** 300 bps ~ 230.4 kbps
- **Serial Signals** RS-232: TxD, RxD, CTS, RTS, GND
- **Protection** Built-in 8 KV ESD for all signals

Software

- **Driver Support** 32-bit/64-bit Windows 2000/XP/Vista/7/8/8.1/10, Windows Server 2003/2008/2012, and Linux
- **Operation Modes** COM port redirection mode (Virtual COM)
TCP/UDP server (polling) mode
TCP/UDP client (event handling) mode
Pair connection (peer to peer) mode
- **Configuration** Windows utility, Telnet console, Web Browser
- **Management** SNMP MIB-II
- **Protocols** ICMP, IP, TCP, UDP, BOOTP, DHCP, Auto IP, SNMP, HTTP, DNS, SMTP, ARP, NTP

Mechanics

- **Dimensions (W x H x D)** 46 x 85.1 x 21.2 mm (1.81" x 3.35" x 0.83")
- **Enclosure** Metal with solid mounting hardware
- **Mounting** DIN-rail, Wall
- **Weight** 0.127 kg

General

- **LED Indicators** System: Power, System Status/LAN: Speed, Link/Active
Serial: Tx, Rx

Power Requirements

- **Input** 9 ~ 36 V_{DC}
- **Connector** Terminal block
- **Consumption** 1 W

Environment

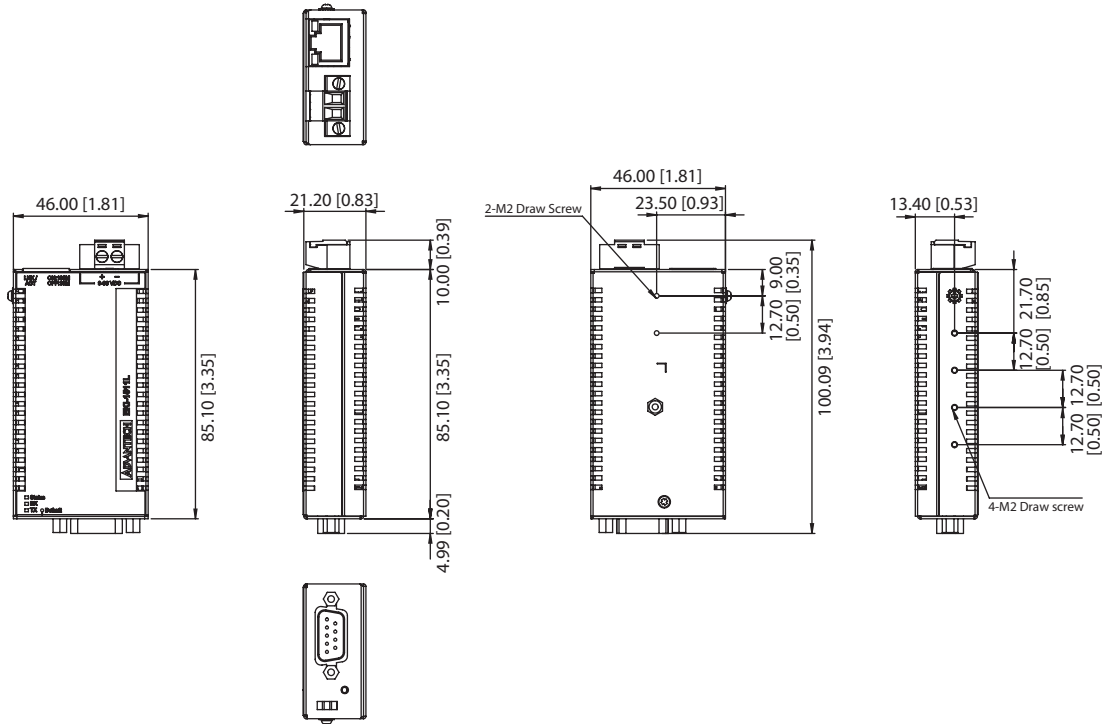
- **Operating Temperature** -10 ~ 60 °C (14 ~ 140 °F)
- **Storage Temperature** -40 ~ 85 °C (-40 ~ 185 °F)
- **Operating Humidity** 10 ~ 95% RH

Regulatory Approvals

- **EMC** CE, FCC Part 15 Subpart B (Class A)

Dimensions

Unit: mm [inch]



Panel Cut-Out Dimensions: 46 x 85.1 x 21.2 (1.81 x 3.35 x 0.83)

Ordering Information

- **EKI-1511L** 1 Port RS-232 Serial Device Server
- **OPT1-PSU12V05-US** Power Adapter 12v 0.5A US
- **OPT1-PSU12V05-EU** Power Adapter 12v 0.5A Europe
- **OPT1-PSU12V05-UK** Power Adapter 12v 0.5A UK